

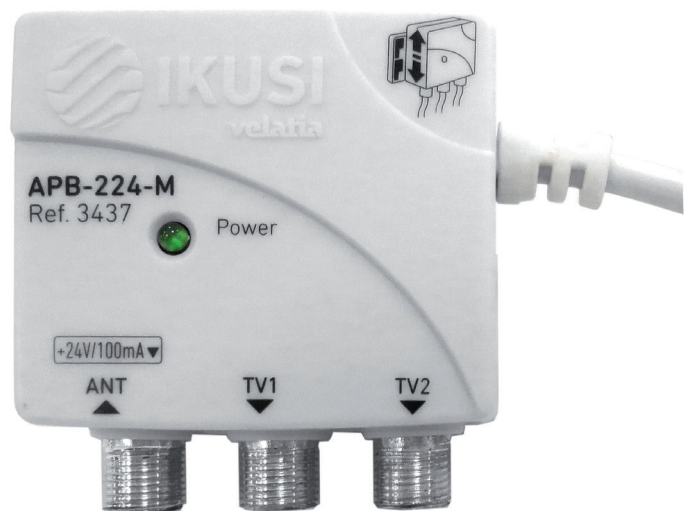
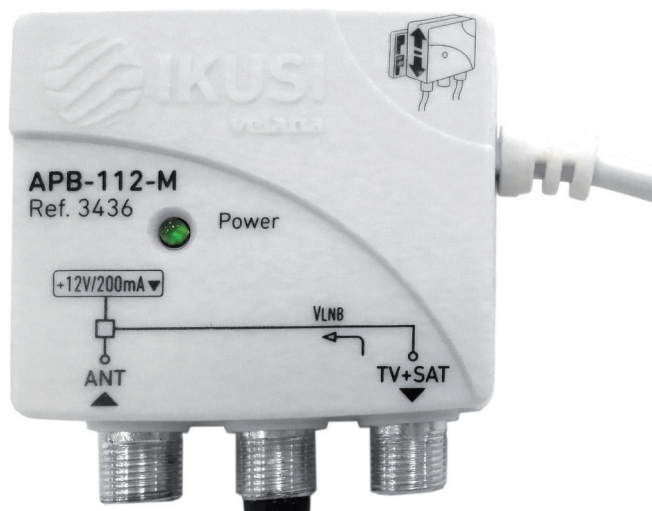


**IKUSI**  
velatia

smartexperience

## Power supplies “micro” APB series

Switch mode power supplies for mast amplifiers.  
Smaller size with terrestrial and satellite inputs.



Optimum power consumption



Adaptable to standard boxes



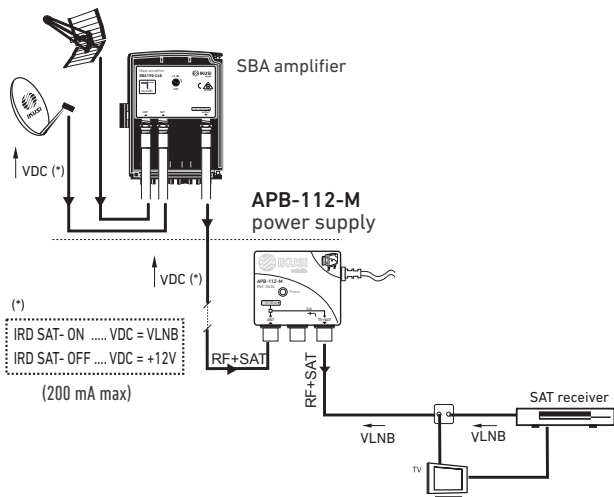
Fastening without tools

**APB power supplies**

MODEL		APB-112-M
REF.		3436
EAN code		8435136434368
Regulation type		switch mode
Output		1
Mains voltage (50 Hz)	VAC	100 - 240
Output voltage	VDC	+12 (±5%)
Output voltage	mA	200
Frequency range	MHz	47 - 2400
RF insertion loss	dB	≤ 1.5
Current pass through	mA	300
Efficiency	%	>70
Dimensions	mm	50 x 50 x 25

MODEL		APB-224-M
REF.		3437
EAN code		8435136434375
Regulation type		switch mode
Outputs		2
Mains voltage (50 Hz)	VAC	100 - 240
Output voltage	VDC	+24 (±5%)
Output voltage	mA	100
Frequency range	MHz	47 - 862
RF insertion loss	dB	≤ 4
Efficiency	%	>70
Dimensions	mm	50 x 50 x 25

### APB-112-M Application example

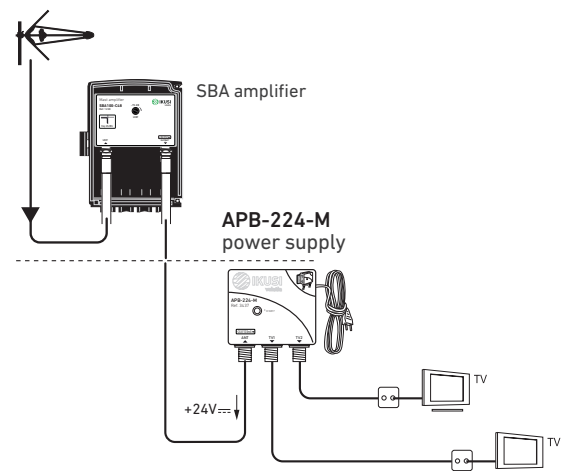


### How the APB-112-M works

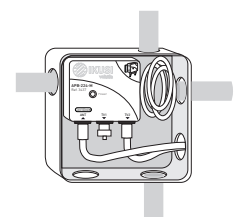
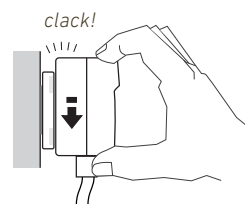
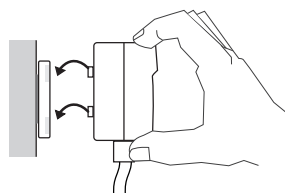
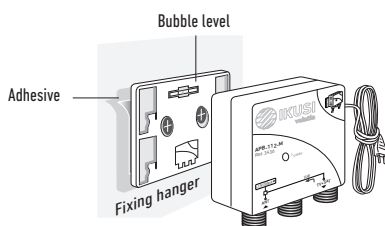
When the user's SAT receiver is OFF or stand-by, the APB-112-M power supply operates normally, providing +12V voltage for the mast-head preamplifier (and also, attention, for the attached LNB). When the SAT receiver is switched ON, the APB-112-M comes automatically to stand-by and let pass the voltage/tone signals from the receiver, so that the LNB as well as the SBA190 preamplifier are powered by the SAT receiver.

- The smallest on the market.
- It allows installation in any junction box.
- Optimum power consumption. Low power switch mode.
- Mounting without tools.
- 1RF input connector + DC output port / 1 or 2 RF outputs ports.

### APB-224-M Application example



### Wall fixing system



Adaptable to standard boxes  
80x80 mm